

WEE WINDOW



You'll need the following (if possible!):

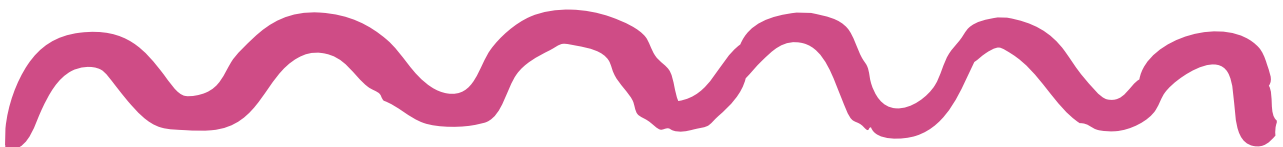
Scissors (an adult should use these unless you have child safety scissors)
Glue Stick
Selection of coloured paper
Newspaper or a magazine
Pens
A4/A3 paper

INSTRUCTIONS

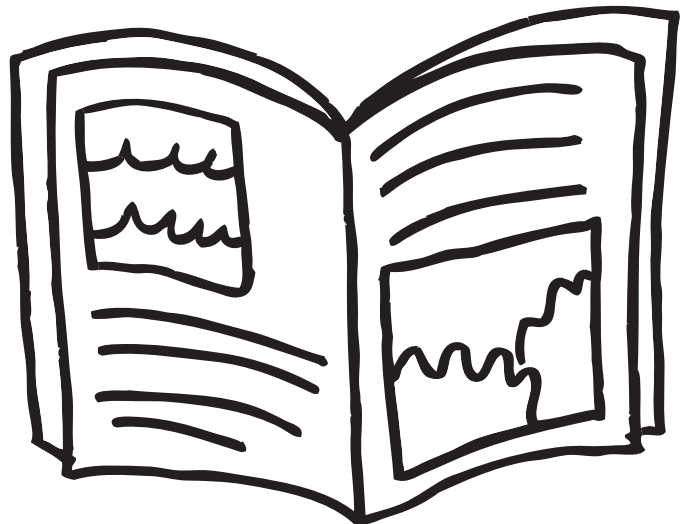
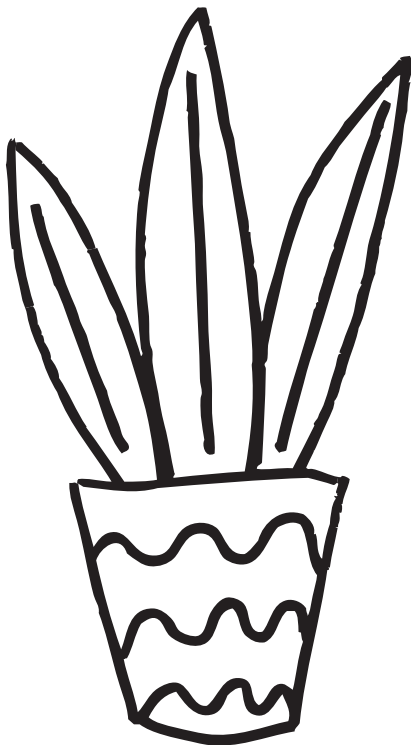
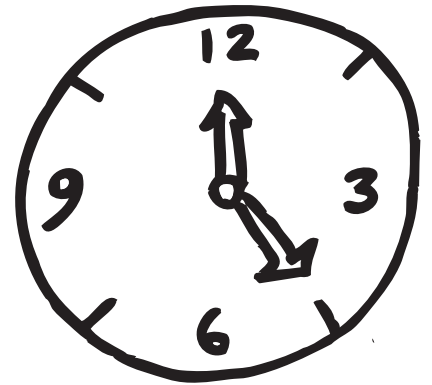
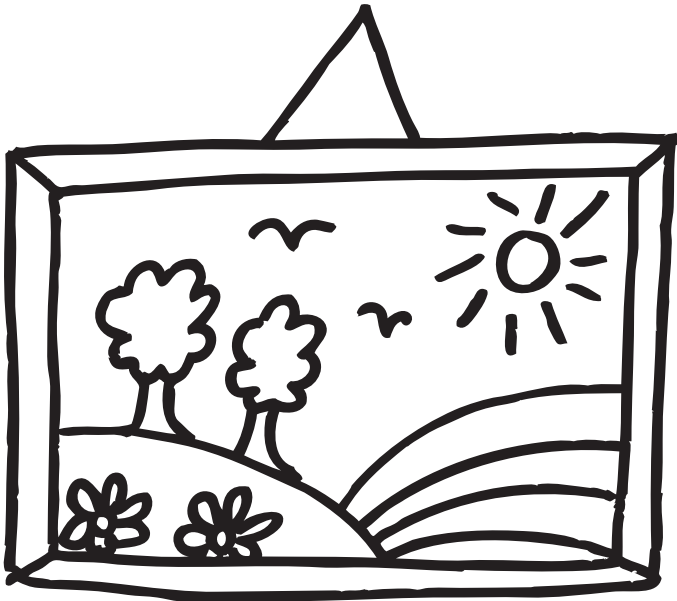
1. Start by choosing a picture from the newspaper or magazine that you can use as the view from your window. Can you find a picture with flowers or a garden or fields, cows and trees? Cut out a rectangle from that picture and stick it on your paper, where you'd like your window to be.
2. Finish off your window by adding window panes, a ledge and curtains. Then start to draw and collage a room around your window, like I have done in the picture above. Think about:

- What wallpaper you might have
- What sort of room is it? A kitchen? Living room? bedroom? What do you find in these rooms?
- Can you make a miniature drawing or painting to hang on your wall?
- Use a mixture of coloured paper and drawing with pens to create your picture.

Mini artwork



CUT OUT OR COLOUR IN



Share your work on social media and tag @platformglasgow, and please use the hashtags #satartclub and #creativitymatters if you can.