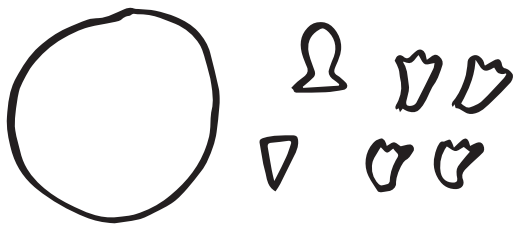


A Christmas Carol

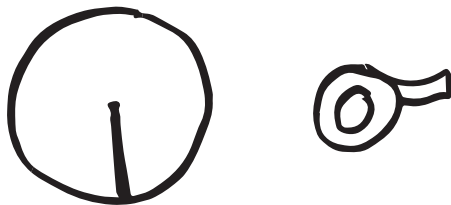
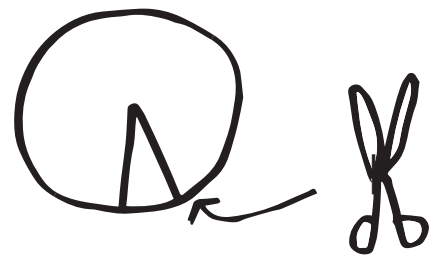
TINY TIM THE TORTOISE

This worksheet will help you make your own Tiny Tim the Tortoise. The template has been provided for you, just follow the instructions below:



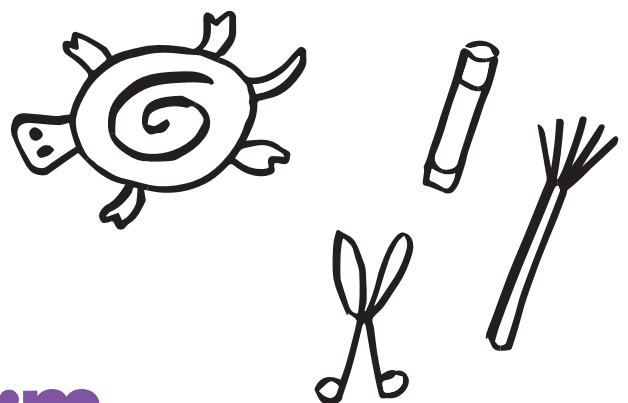
1. Cut out the tortoise shapes provided, You could stick them onto card if you want to make your tortoise stronger.

2. Make a cut along the line that says 'cut' on your circle shape.



3. Overlap your cut line onto the top of the second drawn line on your circle to create your shell. Secure in place with a bit of tape.

4. Attach the tortoise head, arms and legs and tail to your shell. Use a pen or some paint to add some eyes and shell decoration.



platform
the arts centre in Glasgow's east end

TORTOISE SHAPES

