

A Christmas Carol

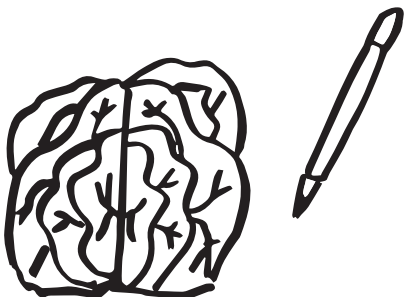
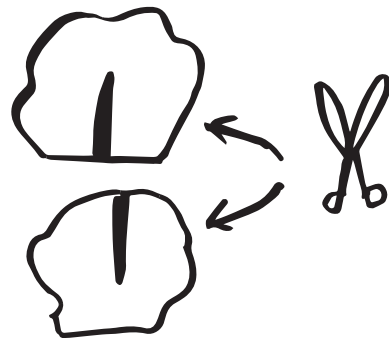
CHRISTMAS LETTUCE!

This worksheet will help you make a Christmas lettuce for Tiny Tim. The template has been provided for you, just follow the instructions below:



1. Cut out the lettuce from the template provided. Stick it onto card and cut it out again. Cut the lettuce in half along the line.

2. Make a cut from the bottom middle of one piece to about half way up. On the other piece cut from the top middle to about half way down. This should allow your pieces to be slotted together.



3. Add colour to your lettuce!

LETTUCE
COLOUR IN!

