

Welcome to Blairtummock Park.
Here you will find a new green place
for you and for nature.

This leaflet will tell you more about
the amazing creatures that live
here – your new neighbours!

There are eight animal posts hidden
around the park. Use the map to
find each one, and complete each
matching activity. You'll learn
about each creature and how to
help to take care of their new homes.

There are lots of games and things
to do so keep a hold of the leaflet for
your next visit to the park!



Co-created by local children and

illustrated by

Cara Rooney

platform



Made possible with
Heritage
Fund



Try to
find the 8
animal posts
hiding around
the park.

Take this
leaflet home
to colour in
and keep.

Map of
the Park



Activity Trail in
Blairtummock Park

Wally Watervole

Wally has just moved in, and is feeling very shy. He has left little clues that he's been around.

Can you spot any of these clues?

Green poo

Grass with diagonal bite marks

Holes in the ground

Spot Ladybird

Spot loves exploring and finding weird places to play in the park.

Can you spot somewhere...

tiny

soft

spiky

hard

red

yellow

smelly

tall

Luna Dog

Luna likes to visit the park to relax and enjoy the green spaces.

Can you find somewhere nice to chill?
Close your eyes. What do you hear?
Can you name three sounds?

Luna also loves a giant chase in the park.

Pick somewhere on the map to run, scoot or wheel to, and see who can get there fastest!

Bench Creature

Bench Creature is the very first resident of Blairtummock Park. She is always very tired, so lies sleeping on the grass.

Can you tell her a bedtime story?

Pick one of the pictures to inspire the story.

Beth Bee

Beth has an important job helping the flowers grow, so more creatures can move to the park. Become a bee and help Beth find more flowers to pollinate.

What noises do bees make?

How do they move?

Buttercup Daisy Dandelion

Can you find any of these flowers on your buzzing adventure?

Blair Blackbird

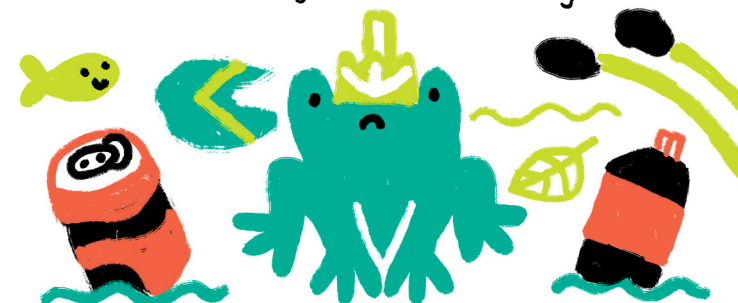
Blair is looking for a new place to live. Create a song to welcome Blair into Blairtummock Park.

Start by listening to the noises in the trees...

Pick something you can see, and think of rhyming words to make a song.

King Frog

King Frog lives under this bridge. He loves his new home, but people keep throwing things and ruining it. Which objects don't belong?



Can you come up with three ideas to stop people throwing litter?

Sammy Squirrel

For rent
Future creature homes growing

Sammy Squirrel is ready to move into Blairtummock Park.

Can you help Sammy pick a tree in the park to move into?

Can you make a pile of twigs for Sammy to make a nest?